



EEN-128

NEW ODEL GENERATORS MANAGEMENT ENVIRONMENT

V1 R1
2023-10-30

NEW ODEL GENERATORS MANAGEMENT ENVIRONMENT

PRELIMINARY NOTE

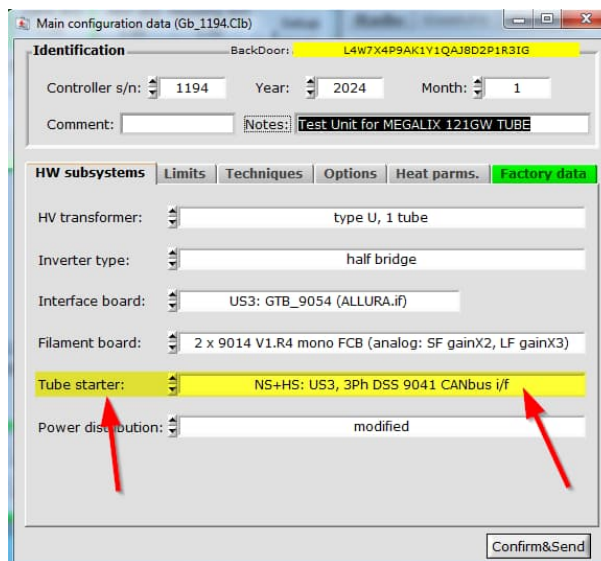
- 1) The new environment automatically selects which executable can be launched in the Windows environment.
- 2) The new environment for managing Odel generators includes the latest changes to be able to manage tubes with three-phase and single-phase stators.

Preliminary:

The tubes with three-phase stators are enabled only if the "9041 THREEPHASE DSS" starter is present in the connected generator.

THREE-PHASE STATOR SELECTION

In the new environment there is both the file for updating the main computer of the "MLU" generator and the file for updating the 3Ph DSS 9041 three-phase starter if it has already been sent to the intended use.



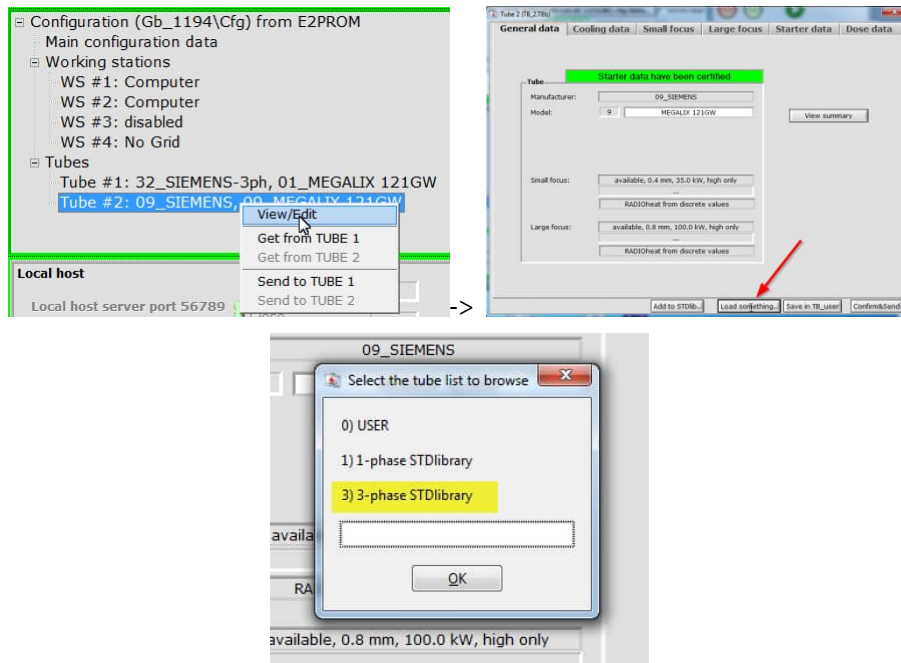
In this case:

The main computer sends phase shift data for use on the 3Ph DSS 9041 between 120° and 90°

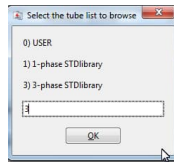
The generator computer (MLU) sends the correct phase shift value to 3Ph DSS 9041 based on the library data during the start-up phase and during the tube change phase to have two tubes with different phase shifts in the same system.

From NavGEN's point of view, the presence of such a starter in the connected system triggers the following request:

DOCUMENTO		FOGLIO
NOMEFILE	CLASSE	1
EEN-128 R1V2 NEW ODEL GENERATOR MANAGEMENT ENVIRONMENT.docx	13	di 3

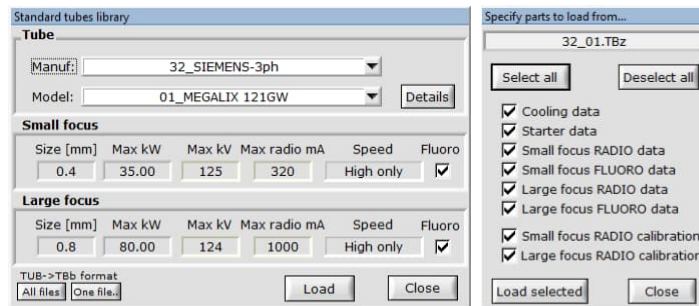


Opening up the possibility of selecting tubes with three-phase stators.

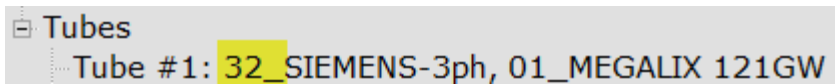


In this case select category 3:

Currently present is the Siemens three-phase stator for LMB tube with MEGALIX 121 80kW 0.4 0.8 insert



NOTE



The tube has a preamble 32_ to indicate that it is a three-phase stator.

DOCUMENTO		FOGLIO
NOMEFILE	CLASSE	2
EEN-128 R1V2 NEW ODEL GENERATOR MANAGEMENT ENVIRONMENT.docx	13	di 3



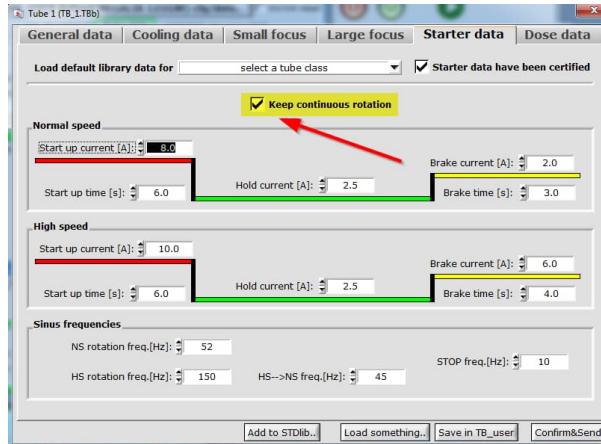
EEN-128

NEW ODEL GENERATORS MANAGEMENT ENVIRONMENT

V1 R1
2023-10-30

CONTINUOUS ROTATION SELECTION FOR LMB ANODES

If the starter is 3Ph DSS 9041, for anodes with liquid bearings, where continuous rotation is required, there is the possibility of instructing the generator computer to maintain rotation continuously until the equipment is turned off:



DOCUMENTO		FOGLIO
NOMEFILE	CLASSE	3
EEN-128 R1V2 NEW ODEL GENERATOR MANAGEMENT ENVIRONMENT.docx	13	di 3