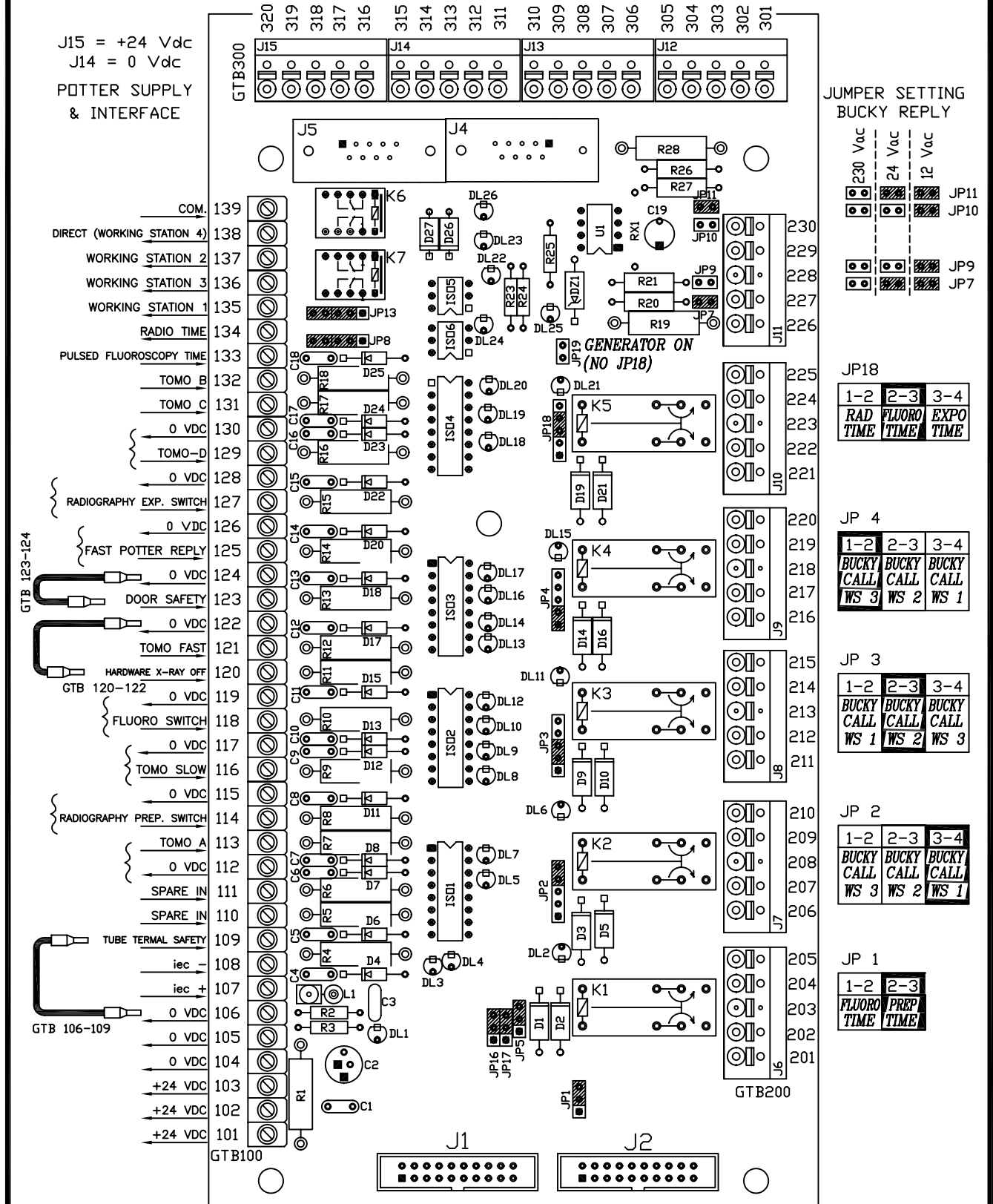


ENDEAVOUR

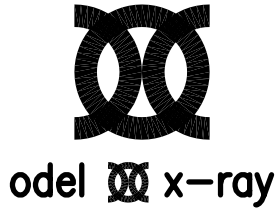
CODE	DRAWING TITLE	VER.	REV.	DATE
5907	GENERAL TERMINAL BOARD LAYOUT	1	3	13/07/2005
5907	GENERAL TERMINAL BOARD DIAGRAM 1/2	1	3	09/03/2005
5907	GENERAL TERMINAL BOARD DIAGRAM 2/2	1	3	28/02/2007
5927	ERIS-Endeavour to hiRIS INTERFACE BOARD LAYOUT	1	4	21/03/2006
5927	ERIS-Endeavour to hiRIS INTERFACE BOARD DIAGRAM 1/2	1	4	28/03/2006
5927	ERIS-Endeavour to hiRIS INTERFACE BOARD DIAGRAM 2/2	1	4	28/03/2006
5927	ERIS-Endeavour to hiRIS INTERFACE BOARD LAYOUT	2	3	13/09/2006
5927	ERIS-Endeavour to hiRIS INTERFACE BOARD DIAGRAM 1/2	2	3	09/12/2003
5927	ERIS-Endeavour to hiRIS INTERFACE BOARD DIAGRAM 2/2	2	3	09/12/2003
5947	UNIVERSAL DIGITAL INTERFACE LAYOUT	1	2	16/04/2007
5947	UNIVERSAL DIGITAL INTERFACE DIAGRAM 1/2	1	2	13/04/2007
5947	UNIVERSAL DIGITAL INTERFACE DIAGRAM 2/2	1	2	13/04/2007
5940	ERIS INTERFACE ADAPTER BOARD LAYOUT	1	1	06/12/2005
5940	ERIS INTERFACE ADAPTER BOARD DIAGRAM	1	1	06/12/2005
IMI-0127	R306.3X TO ABS CONNECTION	1	2	25/07/2006
5947	UNIVERSAL DIGITAL INTERFACE DESCRIPTION	A7		01/2007

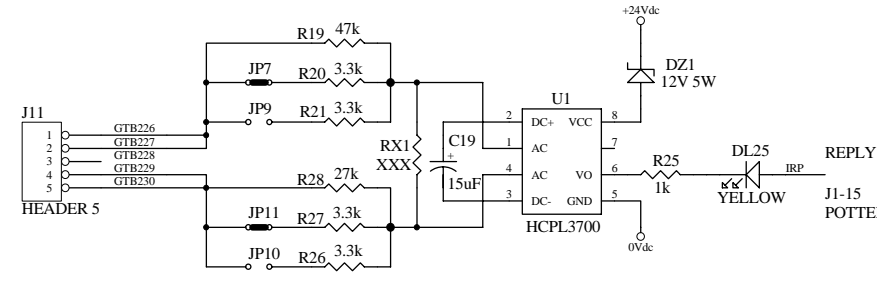
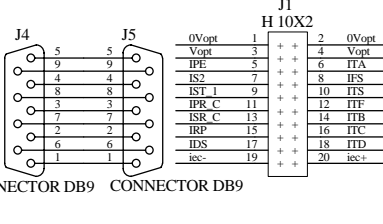
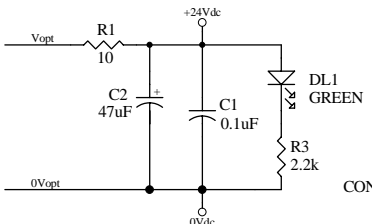
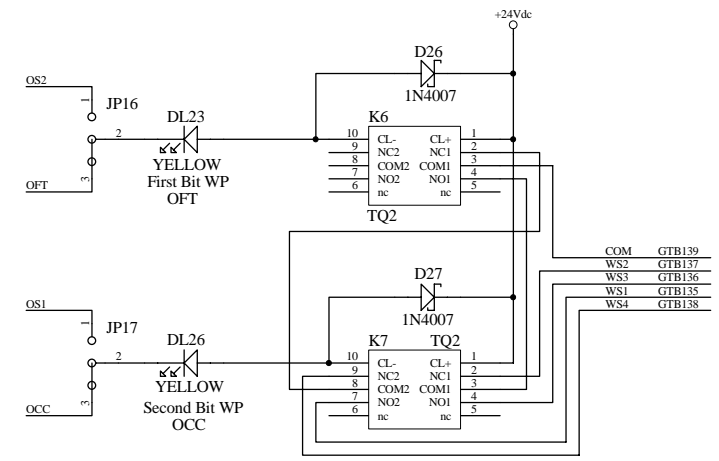
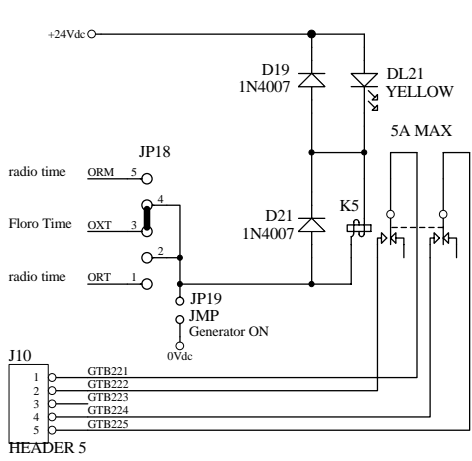
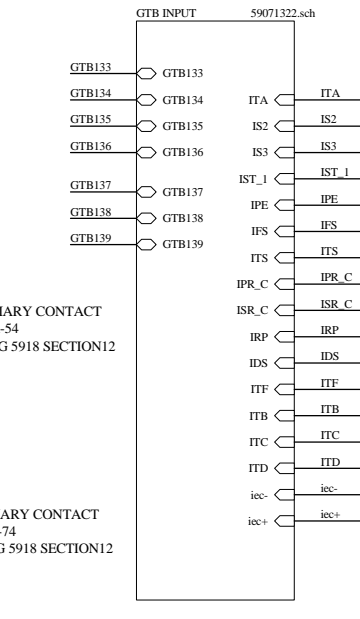
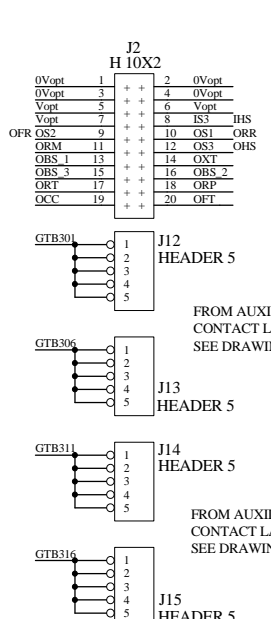
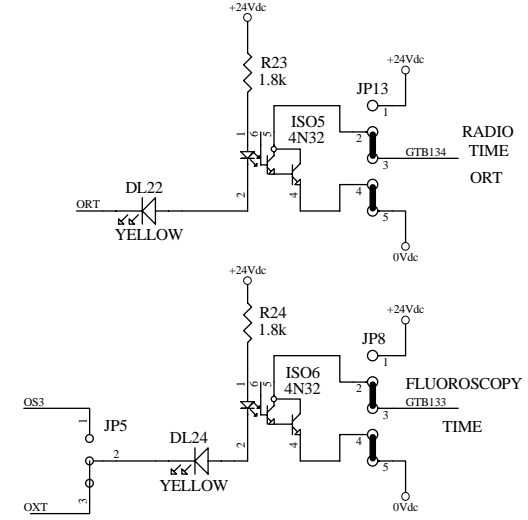
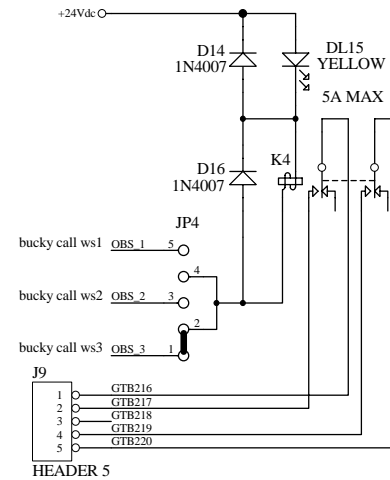
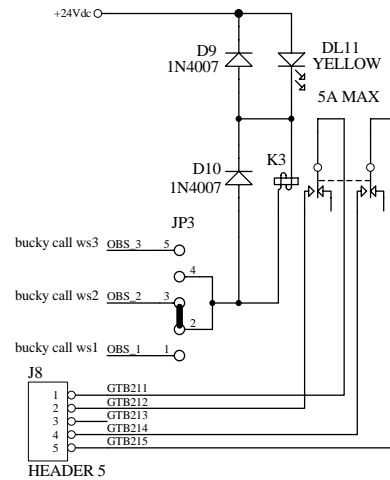
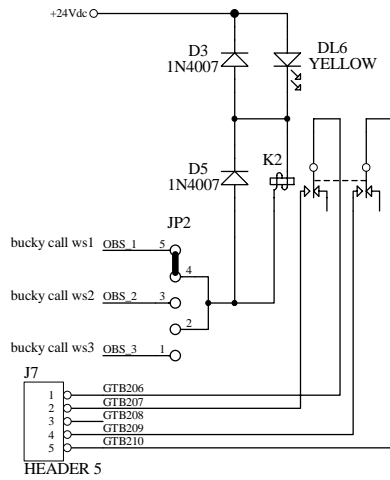
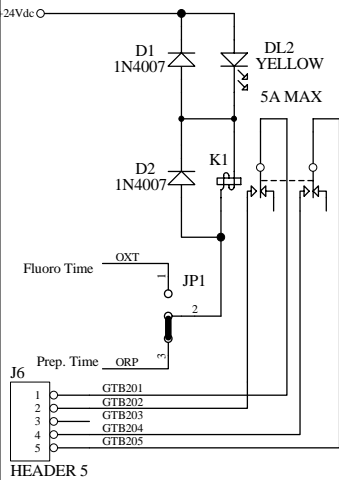
Tutti i diritti sono strettamente riservati. Il presente documento non può essere copiato, fotocopiato, riprodotto in alcun modo, né in parte né integralmente, senza previa autorizzazione della IDEL S.p.A.

All rights strictly reserved. No part of this document can be copied, photocopied, reproduced in any form or by any means without prior permission from IDEL S.p.A.



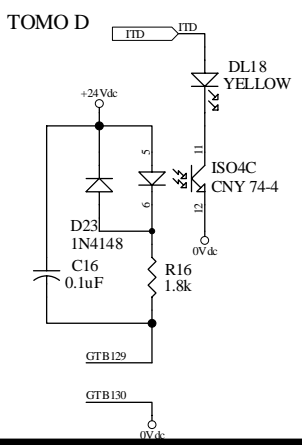
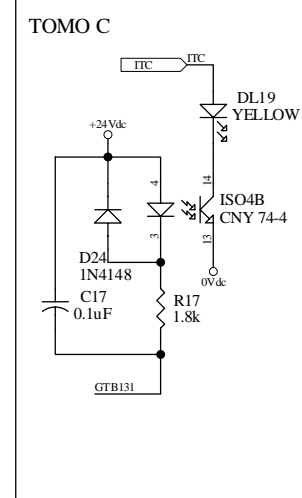
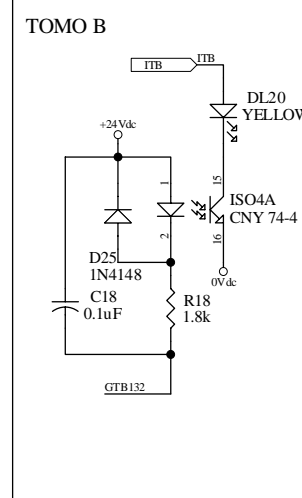
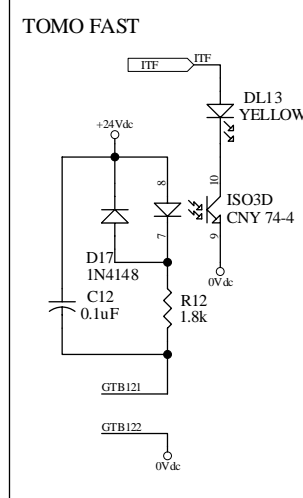
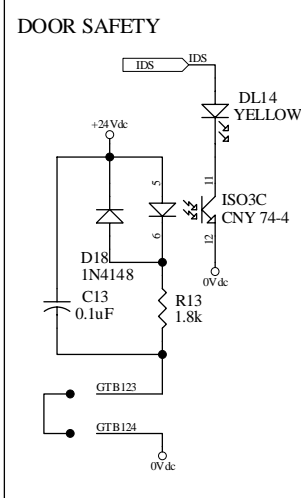
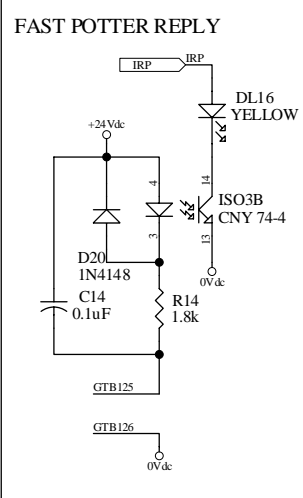
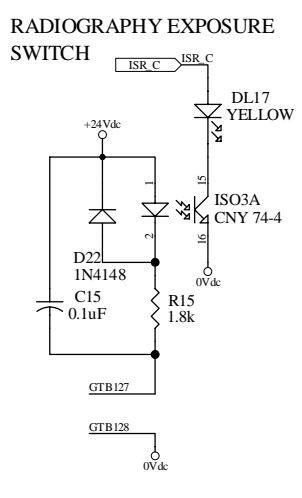
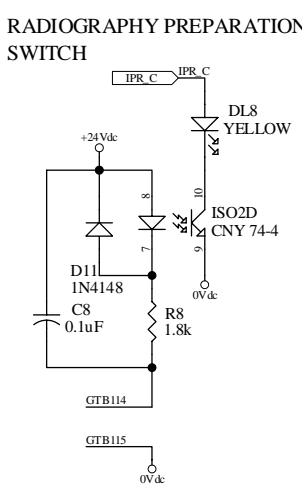
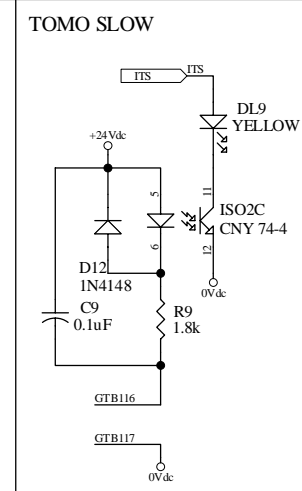
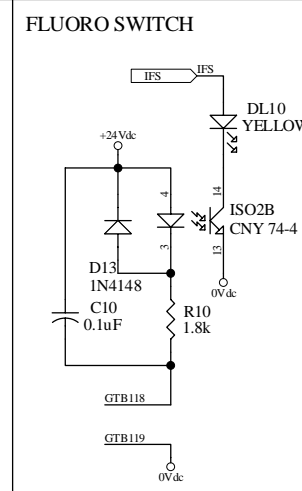
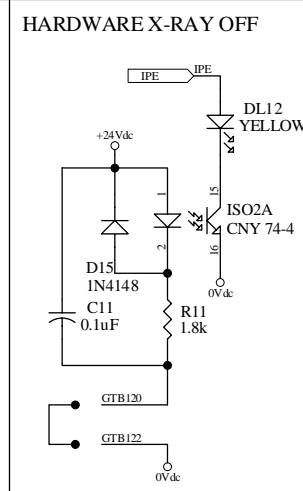
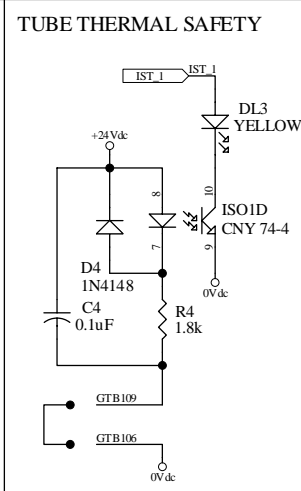
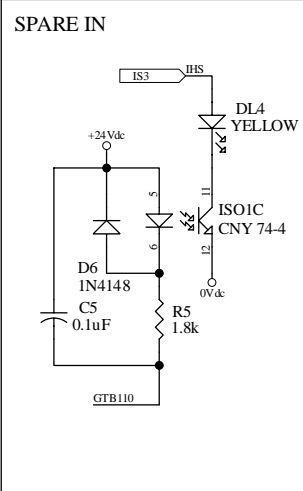
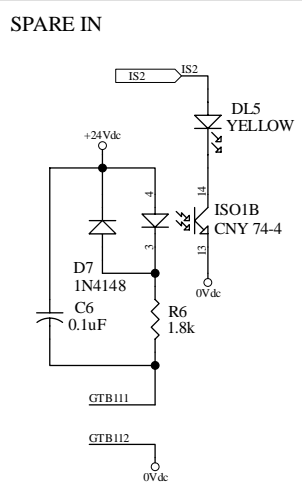
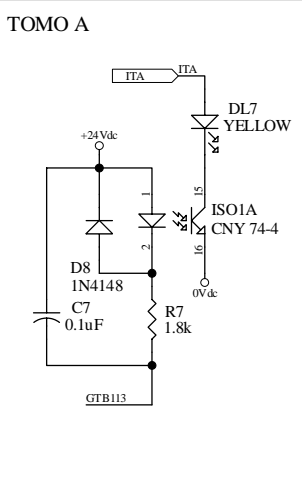
1	REV. 3	MODIFICHE	-	CONTROLLATO IL	13/07/2005
Il presente disegno e' di proprieta' della ditta "Odel S.p.A." o tutti gli effetti di legge			CODICE GREZZO	Nr. DISEGNO	DISEGNATO IL
			CODICE FINITO	5602101	15/12/2003
				5907.05	Nr. PEZZI
					PESO
			TITOLO	FILE	MATERIALE
			GENERAL	59071311.DWG	-
			TERMINAL BOARD	TRATTAMENTI	-
			TOLLERANZE ANGOLARI E LINEARI	FOGLIO di FOGLI	1 di 1
			UNI ISO 2768/1 Classe Toll. = m	SCALA	- : -
			TOLLERANZE GEOMETRICHE		
			UNI ISO 2768/2 Classe Toll. = k		



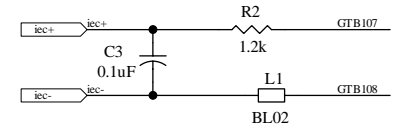
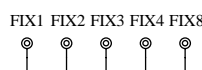
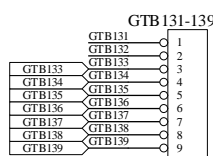
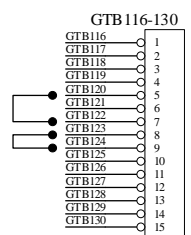
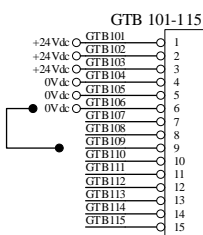


	OFT (NAVIGATOR)	OCC (NAVIGATOR)	DL23	DL26
DIRECT (W.S. 4)	NOT ACTIVE	NOT ACTIVE	OFF	OFF
W.S. 1	NOT ACTIVE	ACTIVE	OFF	ON
W.S. 2	ACTIVE	NOT ACTIVE	ON	OFF
W.S. 3	ACTIVE	ACTIVE	ON	ON

ODEL - X - RAY MONZA ITALY			
Title	GENERAL TERMINAL BOARD		
Size	Document Number	560210.5907.03 V1	Rev 3
Date:	28/02/2007	Sheet 1	of 2



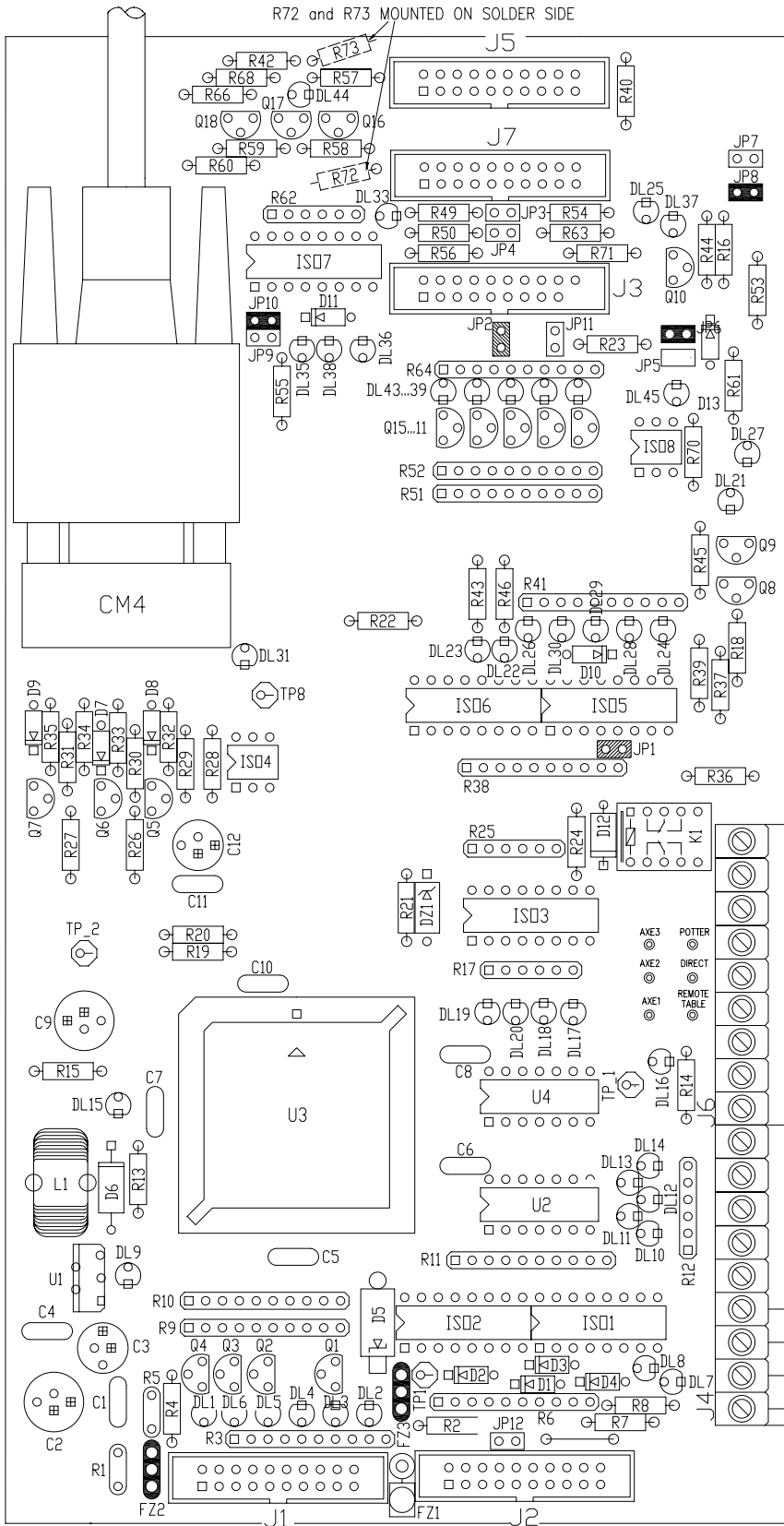
GTB 100



ODEL - X - RAY MONZA ITALY		
Title GENERAL TERMINAL BOARD		
Size	Document Number 560210.5907.03 V1	Rev 3
Date: 09/03/2005	Sheet 2	of 2

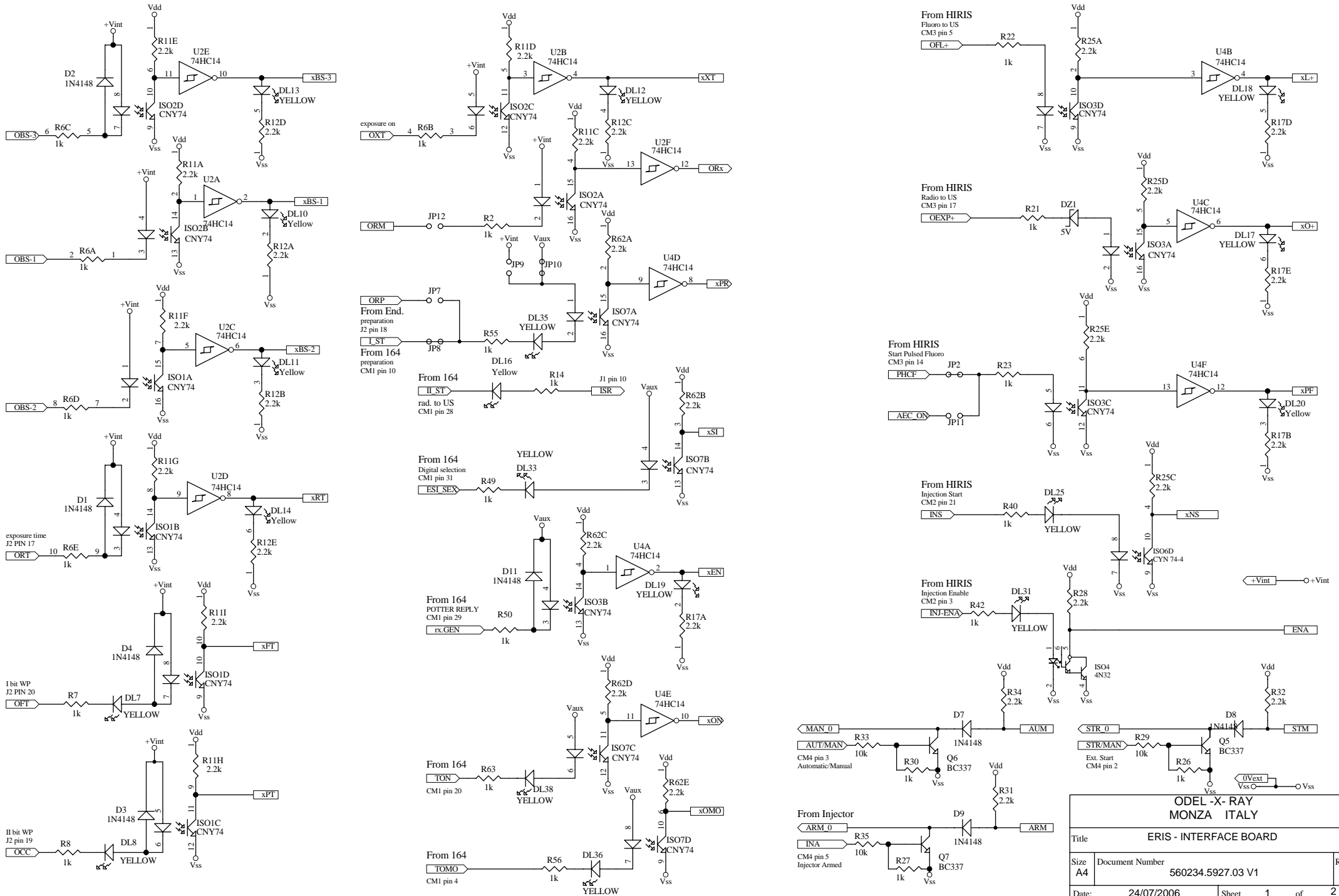
Tutti i diritti sono strettamente riservati. Il presente documento non può essere copiato, fotocopiato, riprodotto in alcun modo, né in parte né integralmente, senza previa autorizzazione della IDEL S.p.A.

All rights strictly reserved. No part of this document can be copied, photocopied, reproduced in any form or by any means without prior permission from IDEL S.p.A.

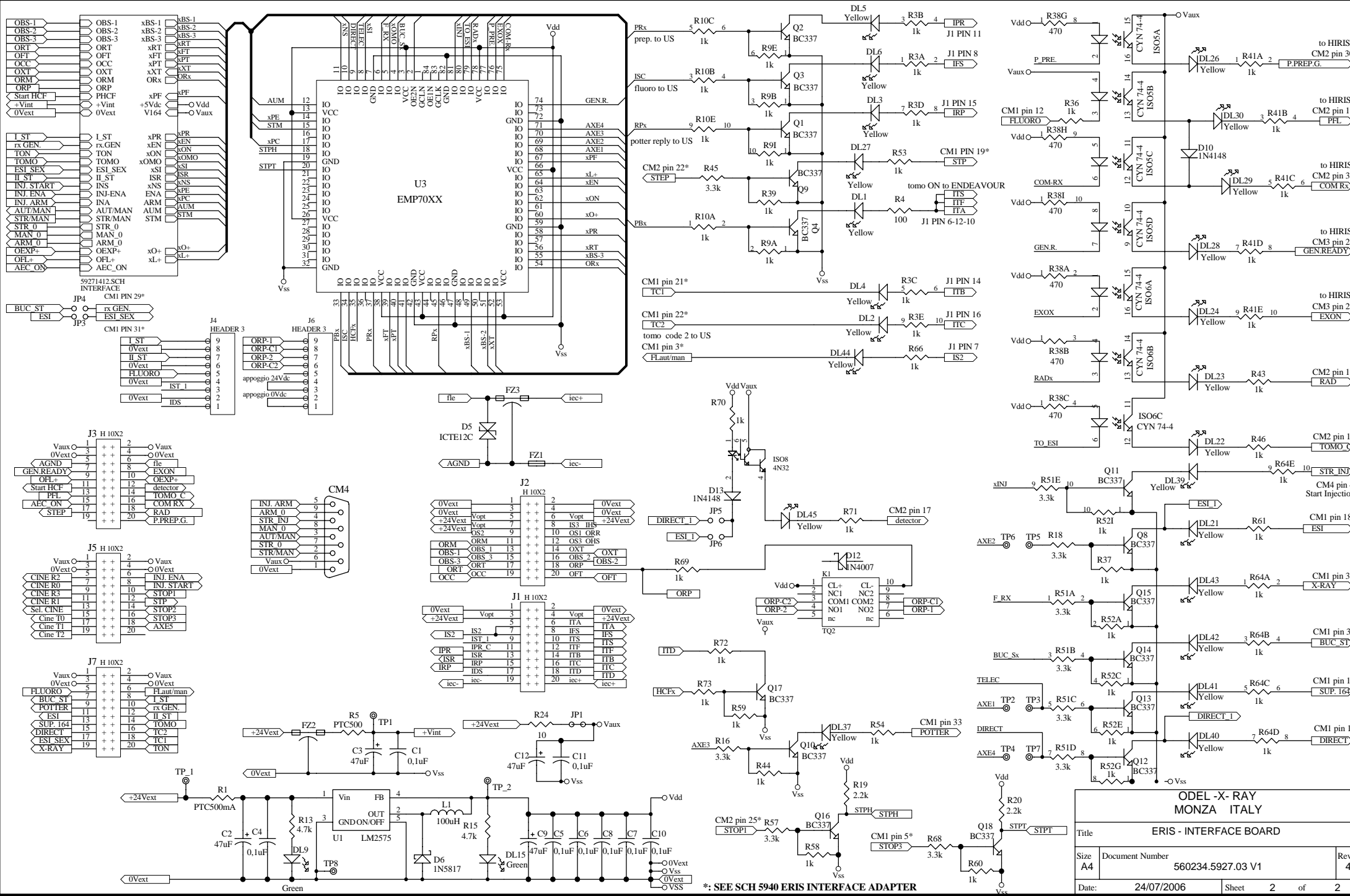


VERSION 1
 Default setted
 EPLD V1 R1
 ERIS-END. INTERFACE
 BOARD-ESI CD
 Close the jumpers JP1 and JP2

VER. 1	REV. 4	MODIFICHE	AGG. PER ESI CD	CONTROLLATO IL 24/07/2006
Il presente disegno e' di proprieta' della ditta "Odel S.p.A." a tutti gli effetti di legge			CODICE STAMPATO 129237	Nr. DISEGNO 5927.08
			CODICE MONTATO 5602341	DISEGNATO IL 21/03/2006
			TITOLO ERIS INTERFACE BOARD R306.3X	Nr. PEZZI 1
			FILE 59271311.DWG	PESO -
			TOLLERANZE ANGOLARI E LINEARI UNI ISO 2768/1 Classe Toll. = m	TRATTAMENTI -
			TOLLERANZE GEOMETRICHE UNI ISO 2768/2 Classe Toll. = k	FOGLIO di FOGLI 1 di 1
			SCALA - : -	



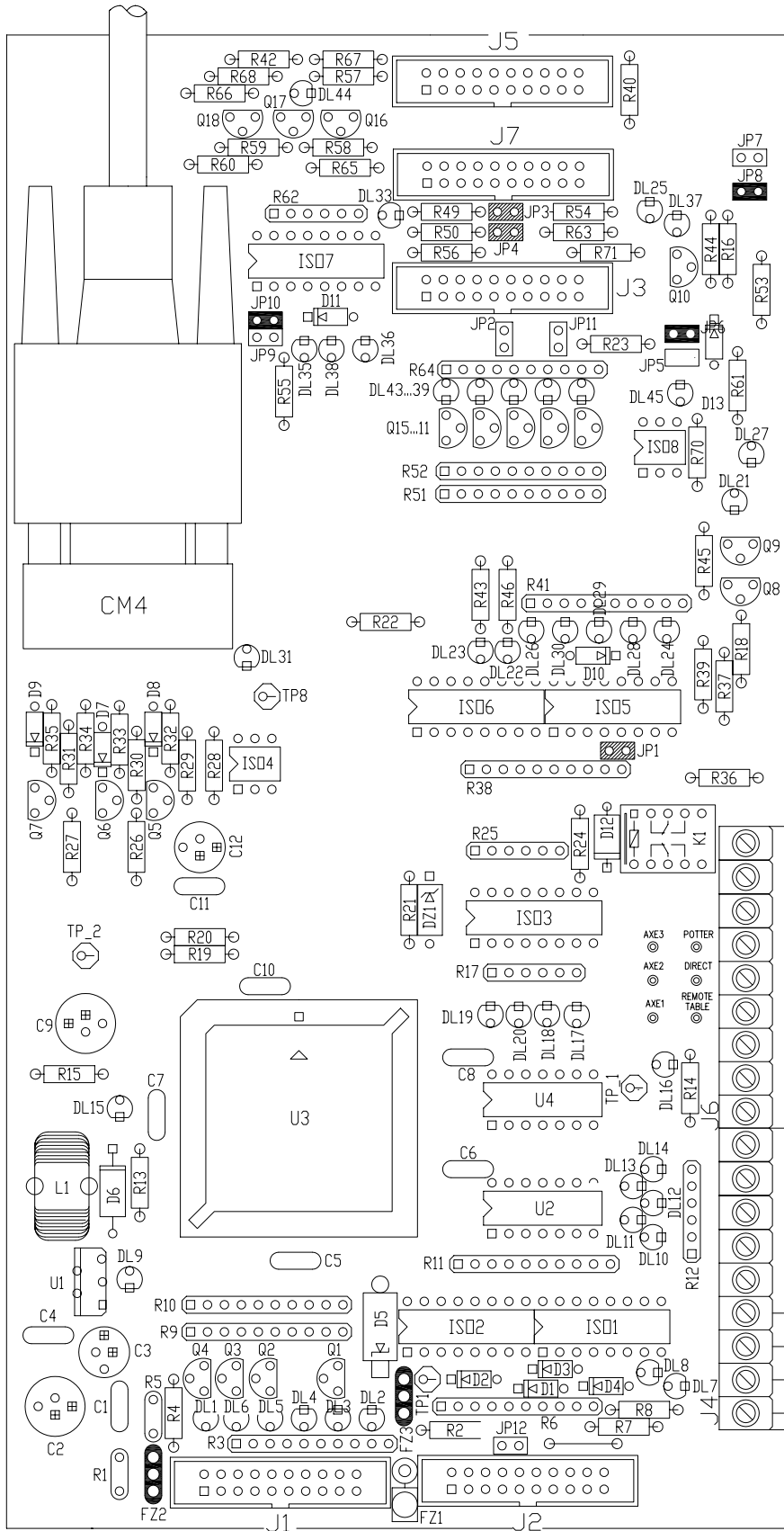
ODEL - X - RAY MONZA ITALY		
Title ERIS - INTERFACE BOARD		
Size A4	Document Number 560234.5927.03 V1	Rev 4
Date: 24/07/2006	Sheet 1	of 2



ODEL - X - RAY MONZA - ITALY			
Title ERIS - INTERFACE BOARD			
Size A4	Document Number 560234.5927.03 V1	Rev 4	
Date: 24/07/2006	Sheet 2	of 2	

Tutti i diritti sono strettamente riservati. Il presente documento non può essere copiato, fotocopiato, riprodotto in alcun modo, né in parte né integralmente, senza previa autorizzazione della IDEL S.p.A.

All rights strictly reserved. No part of this document can be copied, photocopied, reproduced in any form or by any means without prior permission from IDEL S.p.A.



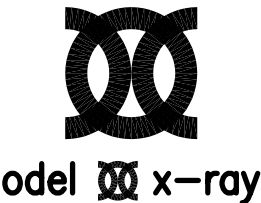
VERSION 2

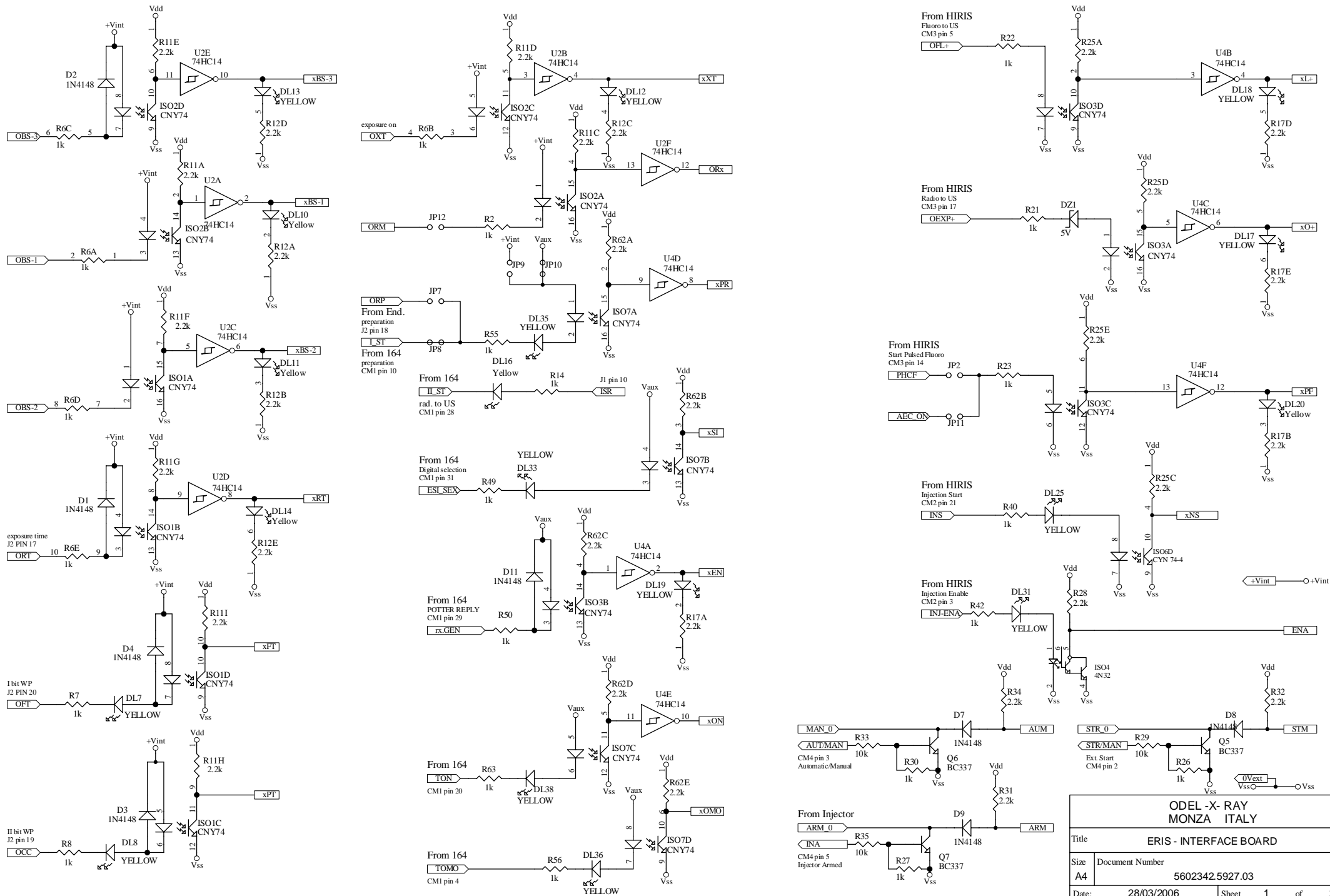
used for EIDOS interfacing
EPLD V2 R2 ERIS-END.
INTERFACE BOARD-EIDOS

Close the jumpers
JP1, JP3 and JP4.

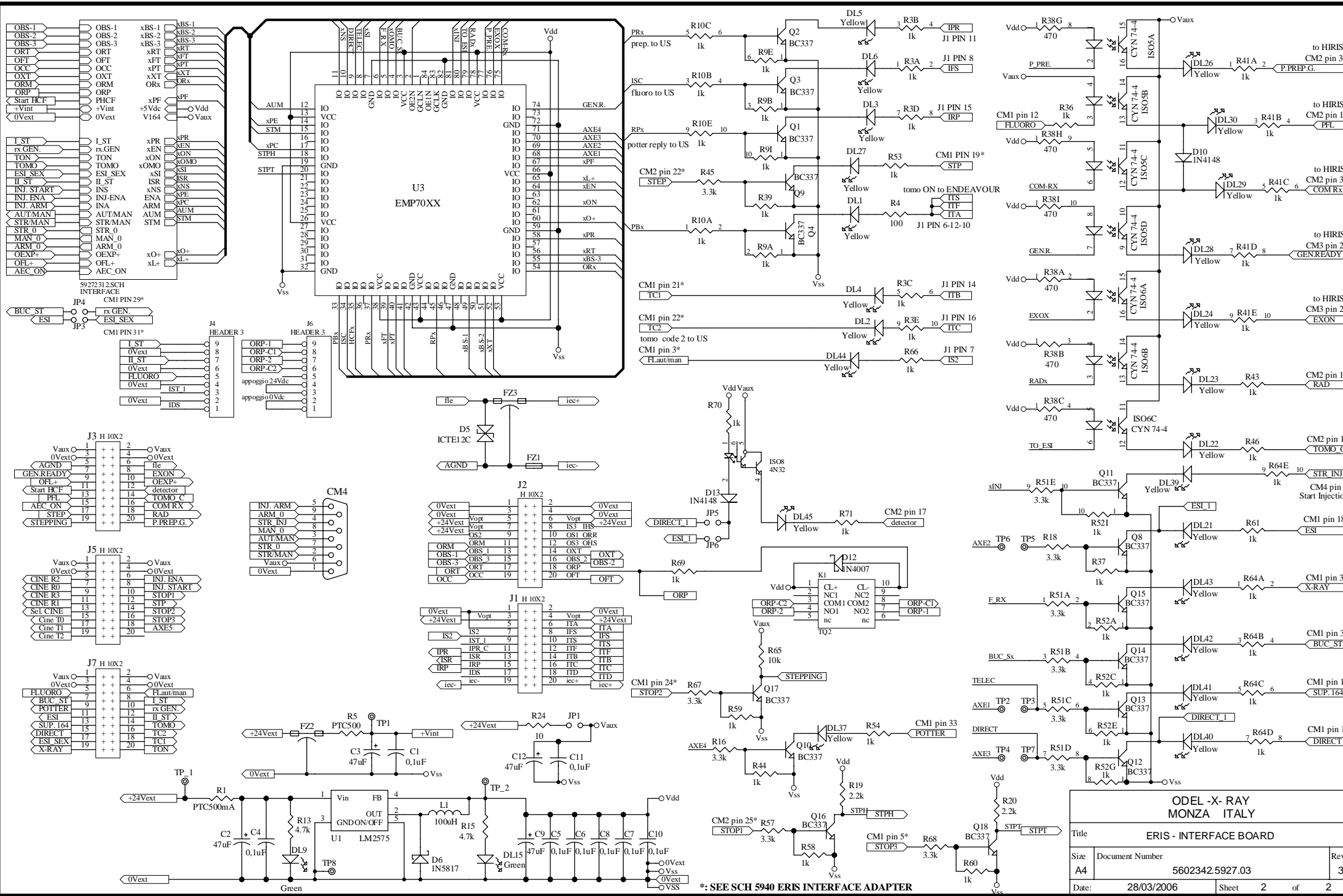
FOR EIDOS-POTTER
Close the jumpers
JP1, JP3, JP4 and JP12.

- N.O. ORP1
- N.O. ORP2
- 24 V dc
- 0 V dc
- Prep.
- Common
- X-ray
- IST1 bridge Working Station
- IDS Bridge Door Safety

VER. 2	REV. 3	MODIFICHE	MODIFIED FOR EIDOS-POTTER		CONTROLLATO IL 13/09/2006	
Il presente disegno e' di proprieta' della ditta "Odel S.p.A." a tutti gli effetti di legge			CODICE STAMPATO 129237	Nr. DISEGNO 5927.08	DISEGNATO IL 09/12/2003	
			CODICE MONTATO 5602342		Nr. PEZZI 1	PESO -
			TITOLO		FILE	
			ERIS INTERFACE BOARD R306.3X FOR EIDOS INTERFACING		59272311.DWG	MATERIALE -
			TOLLERANZE ANGOLARI E LINEARI UNI ISO 2768/1 Classe Toll. = m		TRATTAMENTI -	
TOLLERANZE GEOMETRICHE UNI ISO 2768/2 Classe Toll. = k			FOGLIO di FOGLI 1 di 1		SCALA - : -	



ODEL - X- RAY MONZA ITALY		
Title	ERIS - INTERFACE BOARD	
Size	Document Number	Rev
A4	5602342.5927.03	3
Date:	28/03/2006	Sheet 1 of 2



ODEL - X - RAY MONZA ITALY		
ERIS - INTERFACE BOARD		
Size	Document Number	Rev
A4	5602342.5927.03	3
Date:	28/03/2006	Sheet 2 of 2

*: SEE SCH 5940 ERIS INTERFACE ADAPTER

Generator Output signals

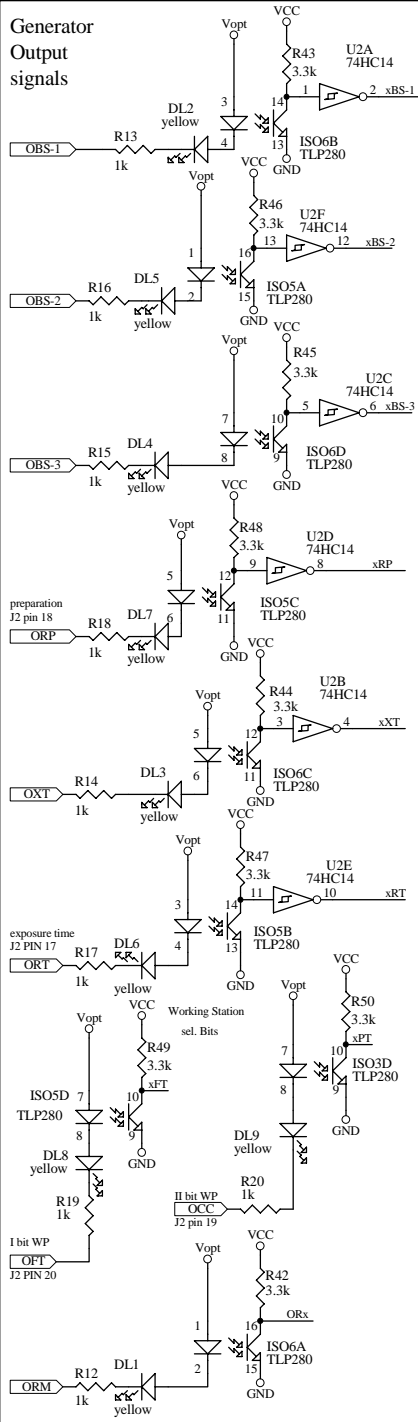
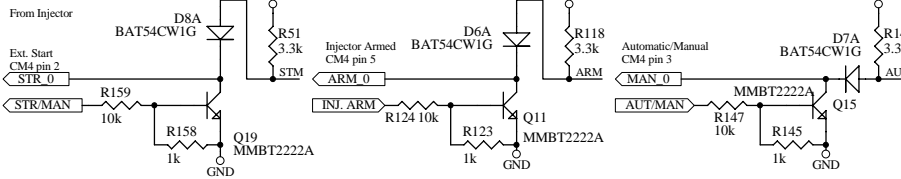
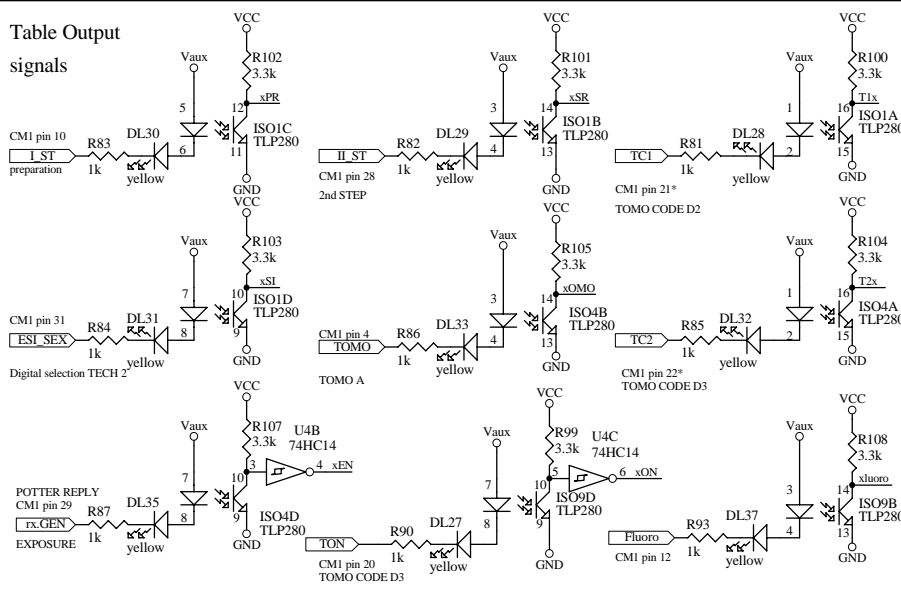
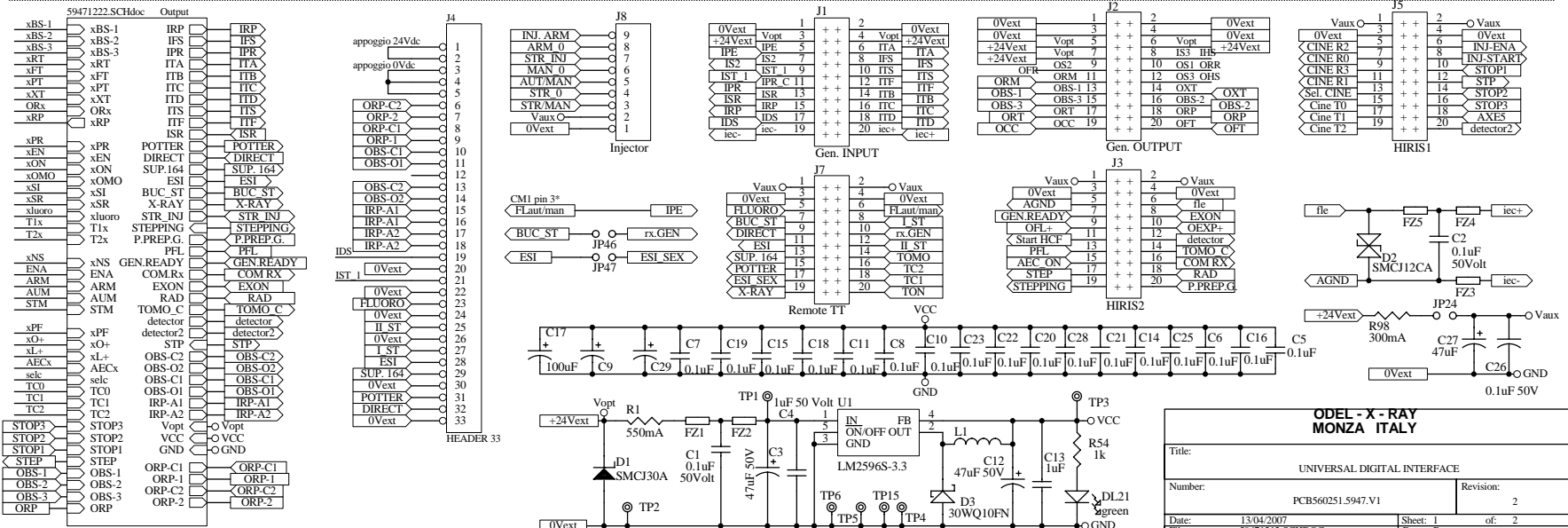
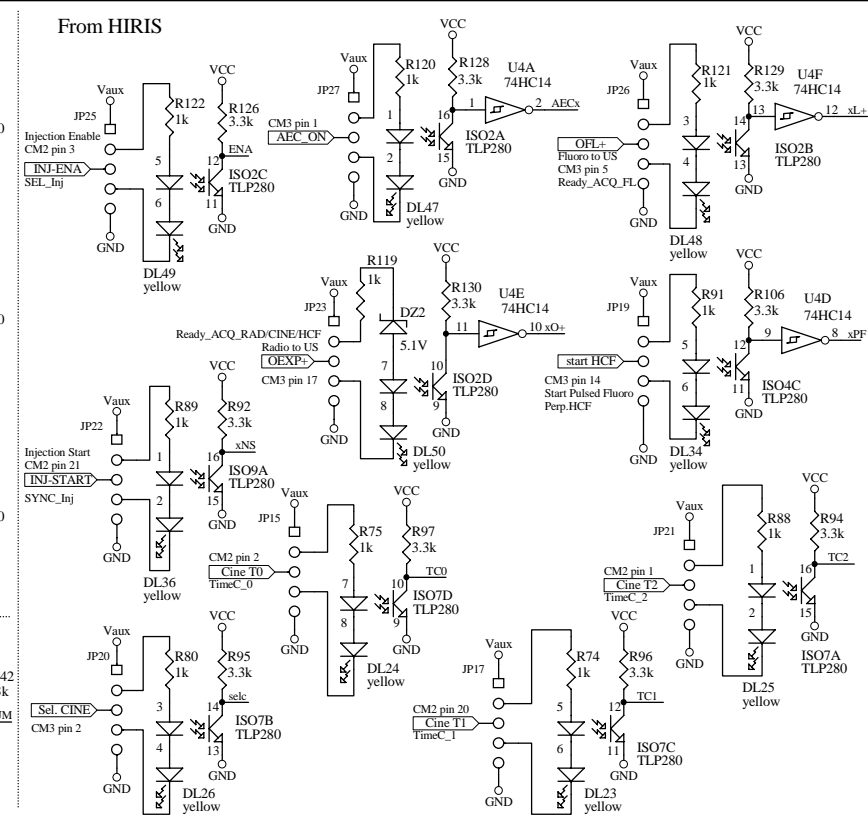


Table Output signals



From HIRIS



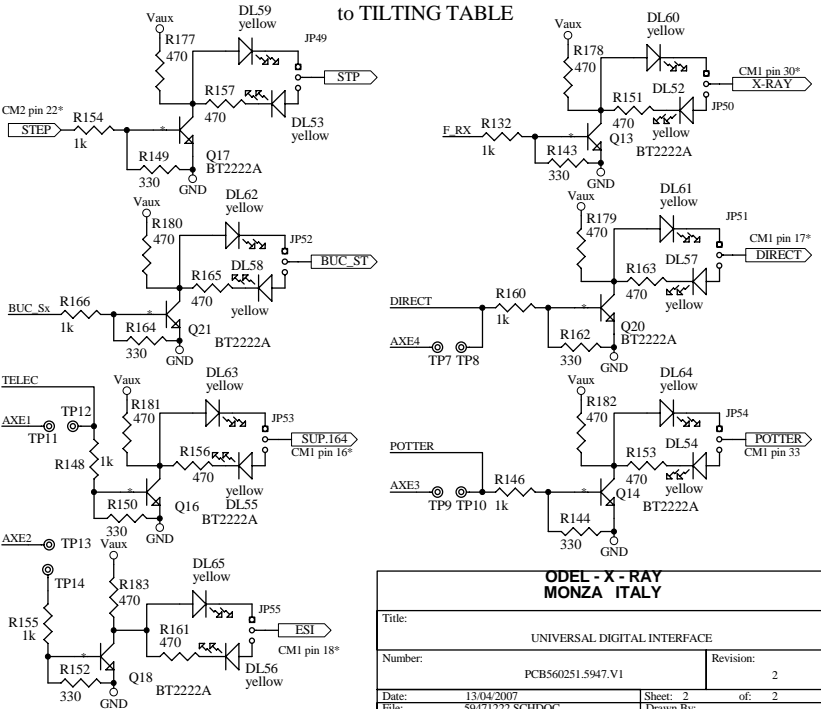
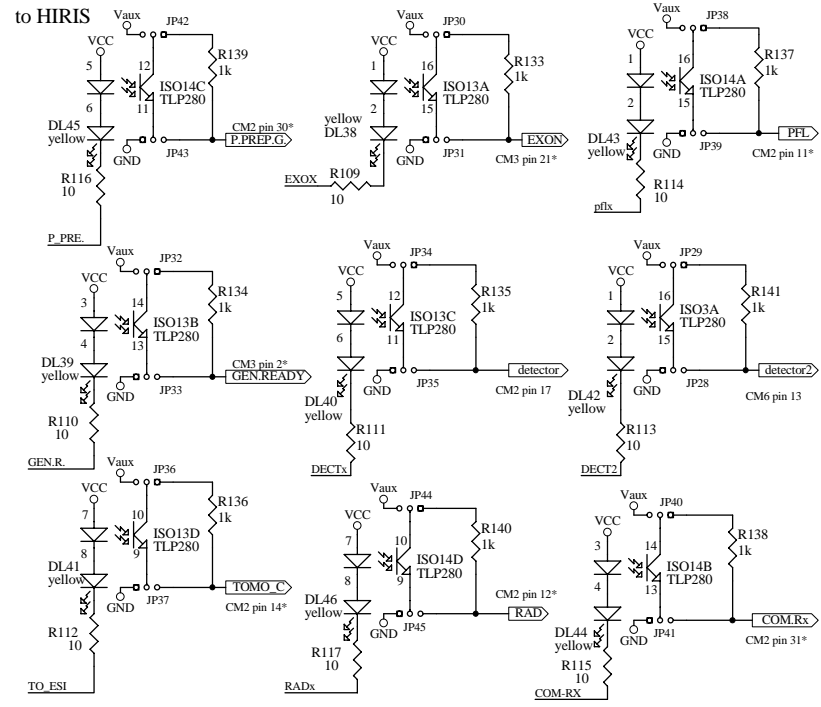
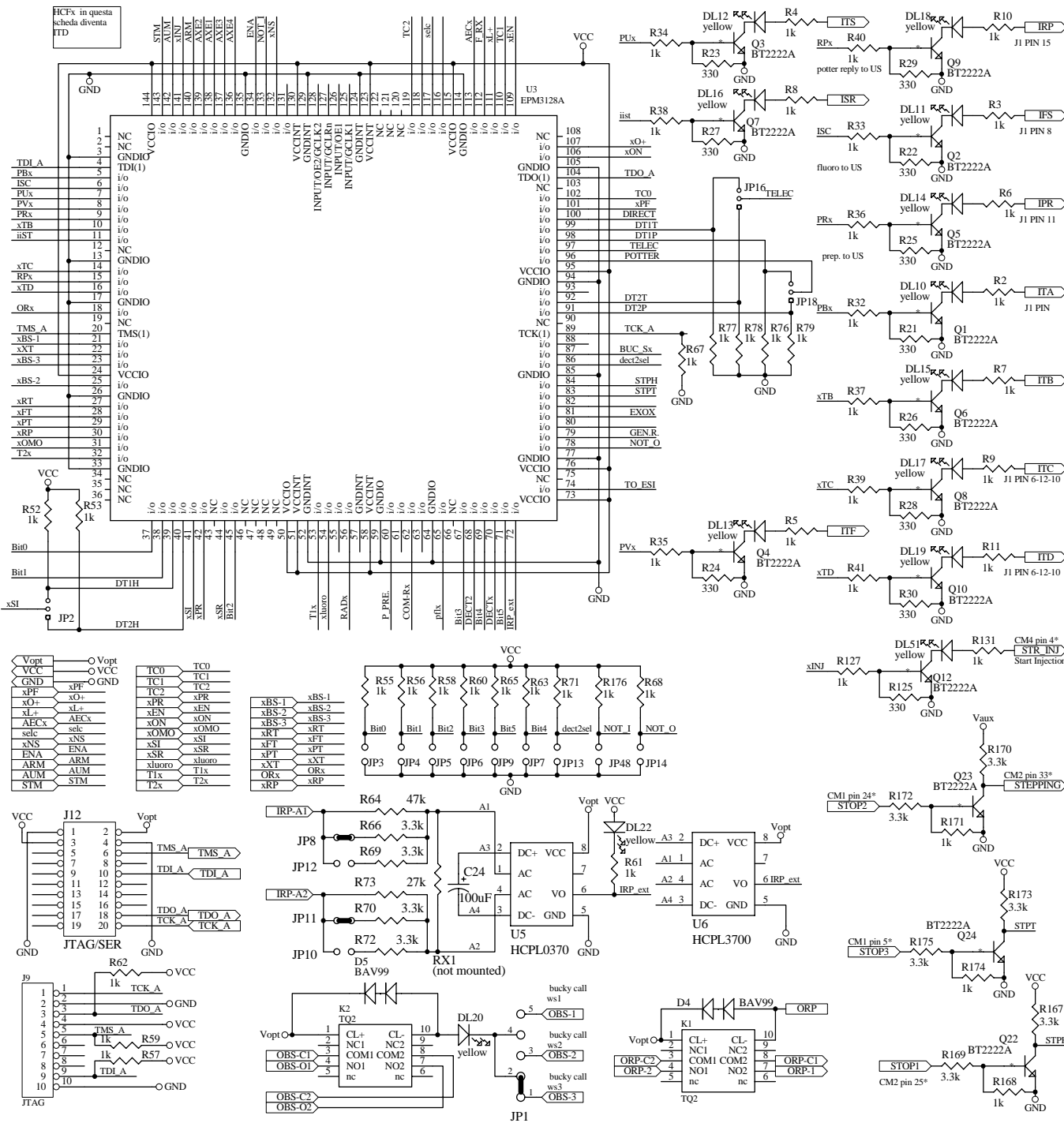
**ODEL - X - RAY
MONZA ITALY**

Title: UNIVERSAL DIGITAL INTERFACE

Number: PCB560251.5947.V1 Revision: 2

Date: 13/04/2007 Sheet: 1 of: 2

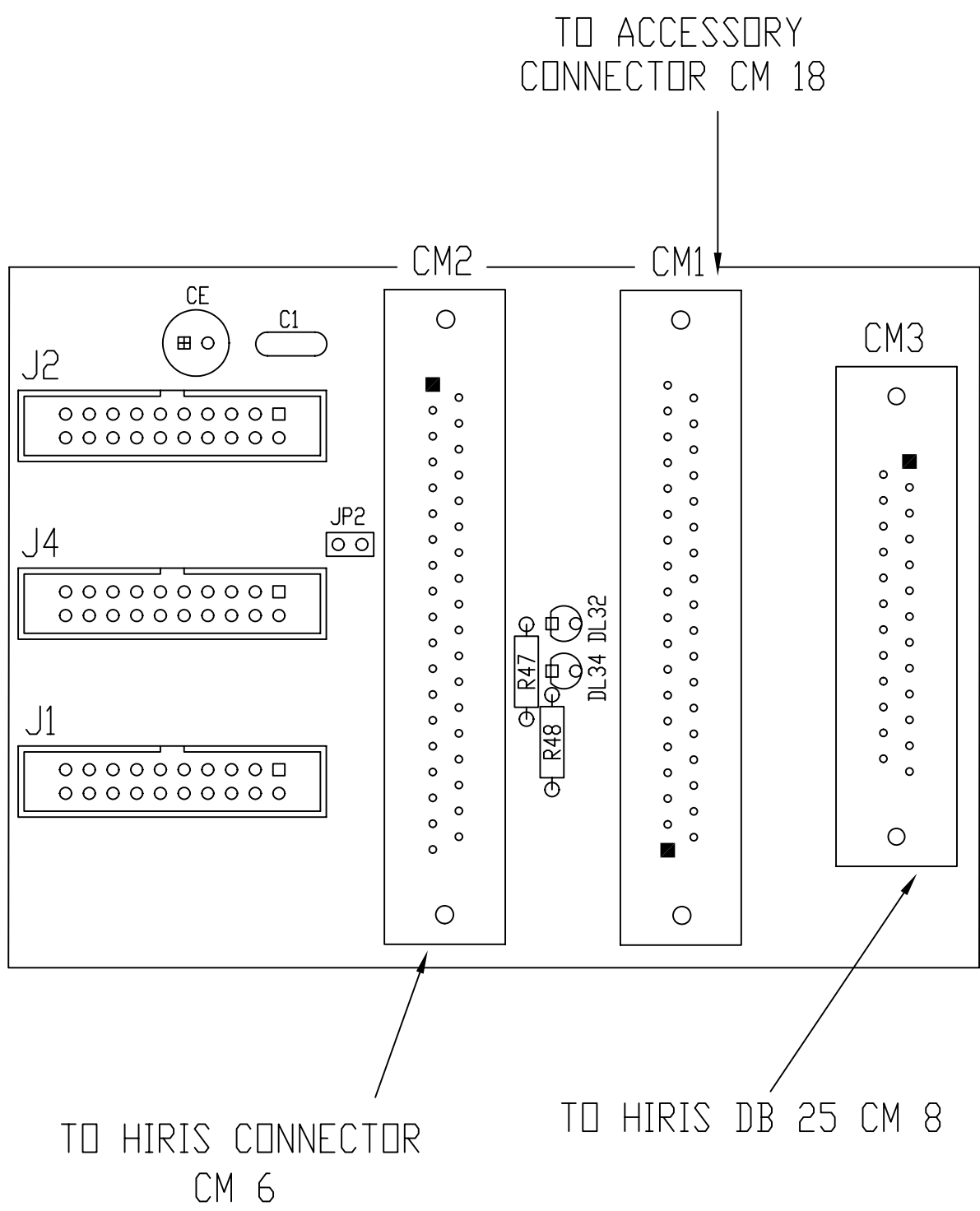
File: 59471212.SCHDOC Drawn By:

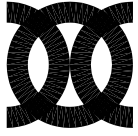
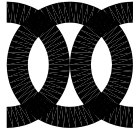
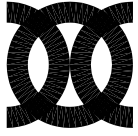
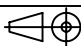


ODEL - X - RAY MONZA ITALY	
Title:	UNIVERSAL DIGITAL INTERFACE
Number:	PCBS60251.5947.V1
Date:	13/04/2007
File:	59471223.SCHDOC
Sheet: 2	of: 2
Revision:	2
Drawn By:	

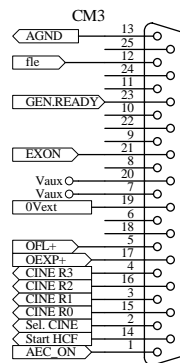
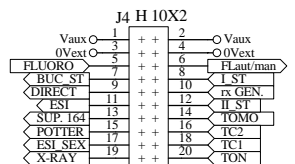
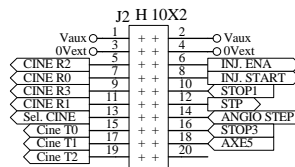
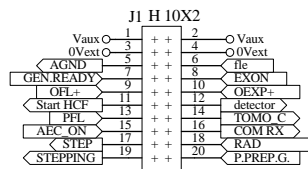
Tutti i diritti sono strettamente riservati. Il presente documento non può essere copiato, fotocopiato, riprodotto in alcun modo, né in parte né integralmente, senza previa autorizzazione della DIEL S.p.A.

All rights strictly reserved. No part of this document can be copied, photocopied, reproduced in any form or by any means without prior permission from DIEL S.p.A.

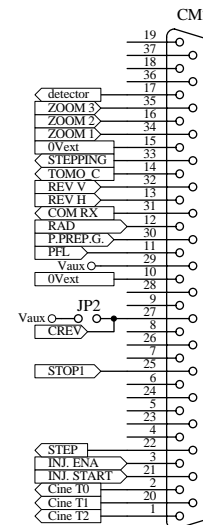


VER. 1	REV. 1	MODIFICHE	<i>INTRODUZIONE DESCRIZIONE CONNESSIONI</i>		CONTROLLATO IL	13/10/2005
VER. 1	REV. 1	MODIFICHE	<i>PRIMA STESURA</i>		CONTROLLATO IL	09/12/2003
Il presente disegno e' di proprieta' della ditta "Odel S.p.A." a tutti gli effetti di legge			CODICE STAMPATO	129243	Nr. DISEGNO	5940.05
			CODICE MONTATO	5602401		
 odel x-ray			E-Iris Interface Adapter for Endeavour		FILE	59401111.DWG
					MATERIALE	CIRCUITO STAMPATO
 odel x-ray			TOLLERANZE ANGOLARI E LINEARI UNI ISO 2768/1 Classe Toll. = m TOLLERANZE GEOMETRICHE UNI ISO 2768/2 Classe Toll. = k		TRATTAMENTI	MONTAGGIO ESTERNO
					FOGLIO di FOGLI	1 di 1
 odel x-ray					SCALA	-
						

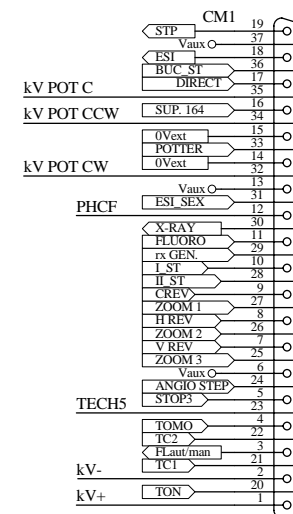
SUP164 --> TECH1
 ESI --> TECH2
 DIRECT --> TECH3
 POTTER --> TECH4



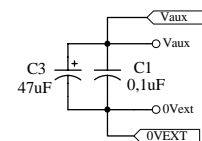
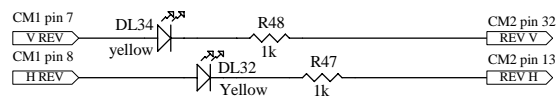
CM3->IO HIRIS CONNECTOR CM8



CM2->IO HIRIS CONNECTOR CM6

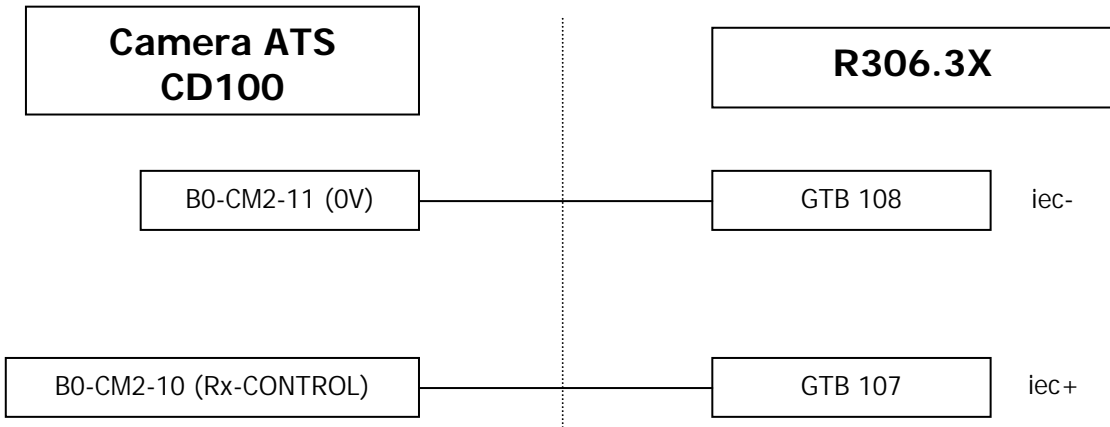


CM1->TO REMOTE T.T. CONNECTOR CM18






ODEL -X- RAY MONZA ITALY		
Title ERIS - INTERFACE ADAPTER		
Size A4	Document Number 560240.5940.03 V1	Rev 1
Date: 13/10/2005	Sheet 1	of 1

	ODEL S.P.A.	IMI-0127 V1 R2 25/07/2006
	R306.3X TO ABS CONNECTION	



For better stability insert JP8 on MCU

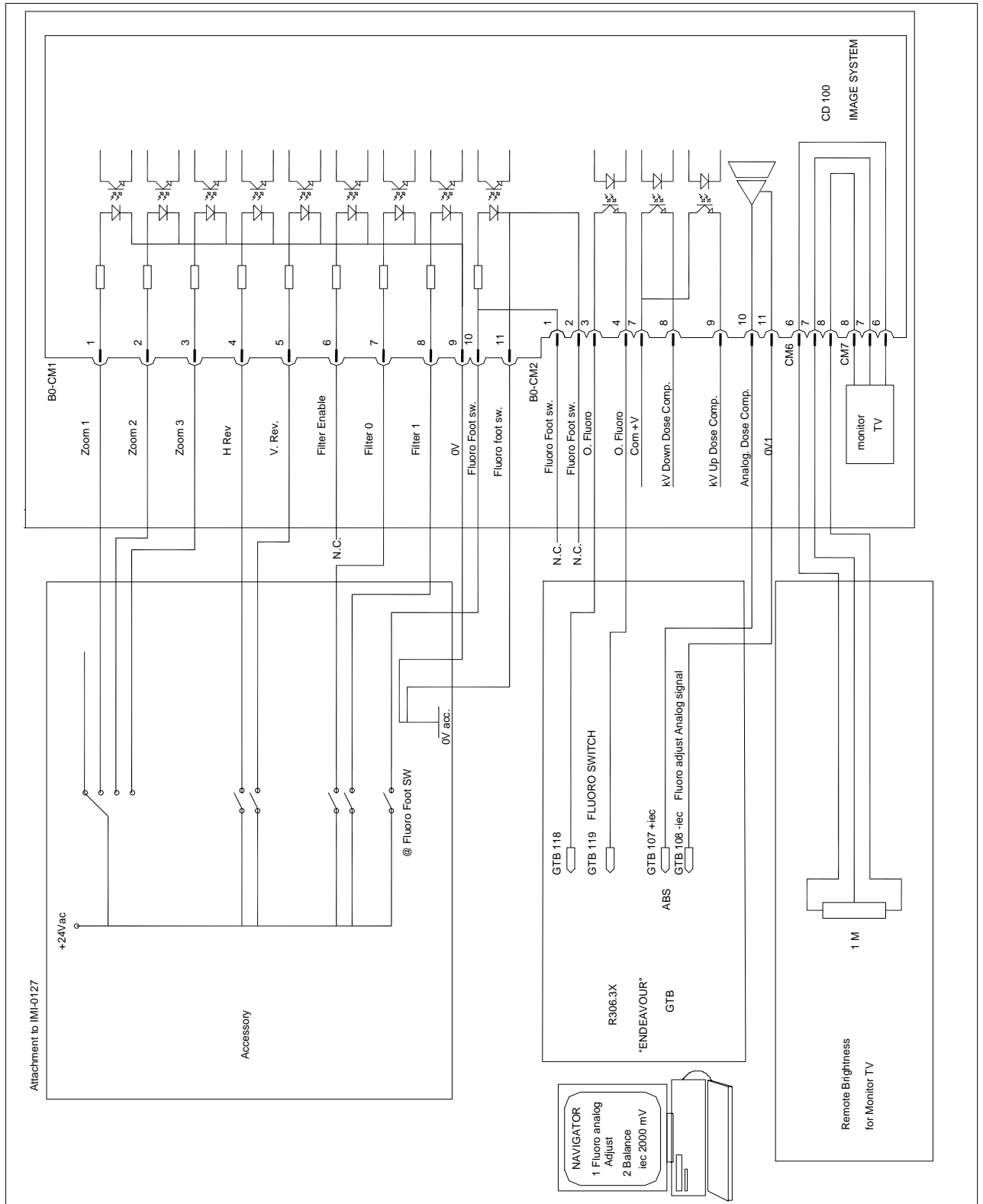
-  WS #1:
-  WS #2:
-  WS #3:

With Navigator connected enter in one Working Station:

Choose tag FLUORO and select all items as in photo below:

Enable Invert kV Direction

DOCUMENTO		FOGLIO
NOMEFILE	CLASSE	1
H:\13 IMI istruzioni modifica ed installazione\DOCS\IMI-0127 V1R2 CONNESSIONE CD100 CON ENDEAVOUR.doc	13	di 2



DOCUMENTO		FOGLIO
NOMEFILE	CLASSE	2
H:\13 IMI istruzioni modifica ed installazione\DOCS\IMI-0127 V1R2 CONNESSIONE CD100 CON ENDEAVOUR.doc	13	di 2