

 odel  x-ray	Odel X-ray	EEN-023
	VIRus 6 Revision Notes	Eng. to Eng.Note 2009-02

Software VIRtualUS 6f Revision Note



Switching on the generator while the MCU switch is in setup position, pressing the  button it is possible to select 4 new print modes:



PRN_EPSON_U220_PATIENT_ID: // Default Printer, working as before



PRN_EPSON_U220_AUTO_LABEL: // Autoprint every X-RAY Session or cumulate'n'print on dose pop-up window depending on AUTOOPEN



PRN_ZEBRA_LP2824_PATIENT_ID: // ZEBRA LP2824 on DYMO 57X32 thermal label with PATIENT ID windows



PRN_ZEBRA_LP2824_AUTO_LABEL: // AUTOPRINT on SESSION or CUMULATE'n'PRINT on dose pop-up windows for ZEBRA LP2824

NOTE: ZEBRA must be in Line Print Mode, see Zebra manual to set it

PATIENT_ID:

"Autowin" button is used to open automatically the dose summary pop-up.

if selected automatically open the dose summary pop-up, if not selected the dose summary pop-up is opened pressing tube icon

"Print" button is used to open the PATIENT ID KEYBOARD WINDOW

"Label" button is used to re-print last label

AUTO_LABEL:


"Autowin" button is used to print automatically the label on rx-end.

if selected automatically print the label, if not selected the dose summary pop-up is opened pressing tube icon

"Print" button is not supported

"Label" button is used to print the label if Autowin is unselected

DOCUMENTO		FOGLIO
NOMEFILE		1
\\ISO9000\25 EEN-023 VirUS 06f Release Note.doc		di 4

 odel x-ray	<h1>Odel X-ray</h1>	EEN-023 Eng. to Eng.Note 2009-02
	VIRus 6 Revision Notes	

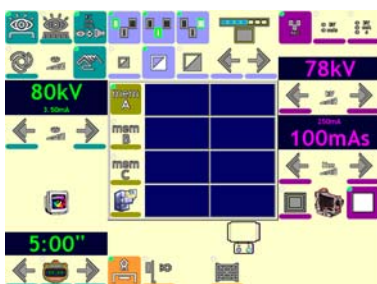
Revision 5 notes

STYLES

The new control console firmware is composed by three different files:



BLUE_STYLE

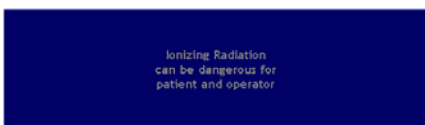


WHITE_STYLE

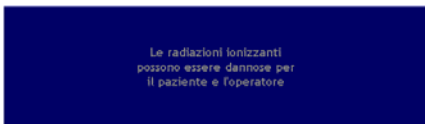


GREEN_STYLE

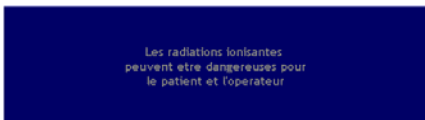
LANGUAGES



ENGLISH




ITALIAN



FRENCH

DOCUMENTO		FOGLIO
NOMEFILE		2
\\ISO9000\25 EEN-023 VirUS 06f Release Note.doc		di 4

 odel x-ray	<h1>Odel X-ray</h1>	EEN-023 Eng. to Eng.Note 2009-02
	VIRus 6 Revision Notes	



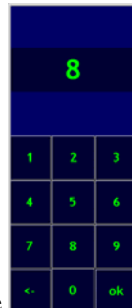
SPANISH


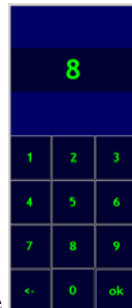
GREEK

CYRILLIC

DIALER/SELECTOR

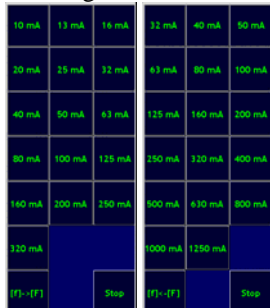
kV DIALER



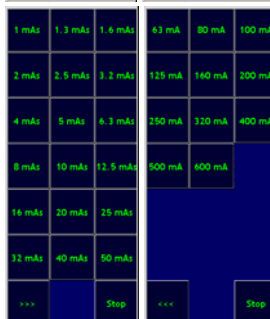
Pressing kV Icon  it is possible to access the  kV DIALER

mA, s, mAs DIALER

Pressing mA, s, mAs, icons it is possible to access the relative SELECTORS:





mA SELECTORS



mAs SELECTORS

DOCUMENTO	FOGLIO
NOMEFILE	3
\\ISO9000\25 EEN-023 VirUS 06f Release Note.doc	di 4

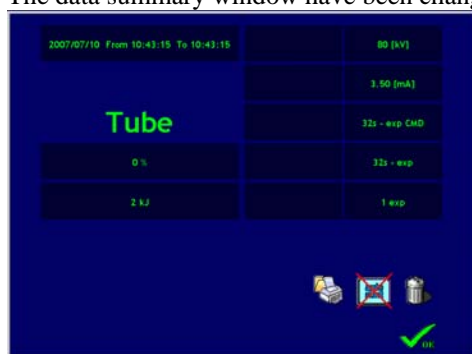
 odel  x-ray	<h1>Odel X-ray</h1>	EEN-023 Eng. to Eng.Note 2009-02
	VIRus 6 Revision Notes	

1 ms	2 ms	3 ms	0.125 s	0.16 s	0.2 s
4 ms	5 ms	6 ms	0.25 s	0.32 s	0.4 s
8 ms	10 ms	13 ms	0.5 s	0.63 s	0.8 s
16 ms	20 ms	25 ms	1 s	1.25 s	1.6 s
32 ms	40 ms	50 ms	2 s	2.5 s	3.2 s
63 ms	80 ms	0.1 s	4 s	5 s	6 s
...		Stop	...		Stop

TIME SELECTORS

DATA SUMMARY

The data summary window have been changed in Continuous mode:



Several section are present:

- EXAM Date and Time
- TUBE Thermal Load
- INTERMITTENT SESSION SUMMARY
- CONTINUOUS SESSION SUMMARY:
 - *s - exp CMD* is the total continuous/HCF command time
(i.e. the sum of the periods while the foot switch was pressed)
 - *s - exp* is the effective emission time:
 FLUORO: DC = 100% -> EXP time = COMMAND time
 HCF = DC < 100% -> EXP time = EFFECTIVE X-RAY TIME < COMMAND time

New Garbage icon, to clear the cumulated dose for next exam.

DOCUMENTO		FOGLIO
NOMEFILE		4
\\ISO9000\25 EEN-023 VirUS 06f Release Note.doc		4