



odel x-ray

Odel X-ray

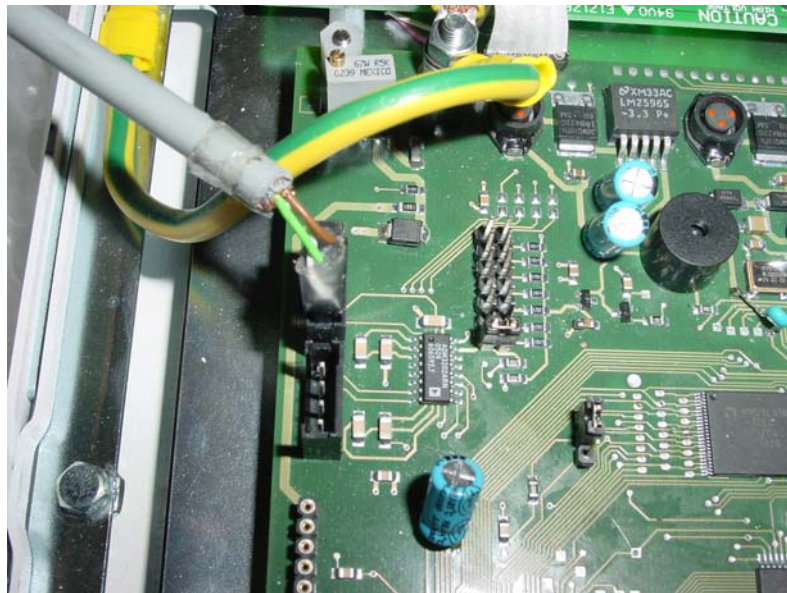
TouchScreen Control Console Software Download

EEN0014
Eng. to Eng.Note
2006-02

OPEN THE CONTROL CONSOLE



INSERT JUMPER "JP1"
INSERT THE ADAPTER IN "J13" CONNECTOR



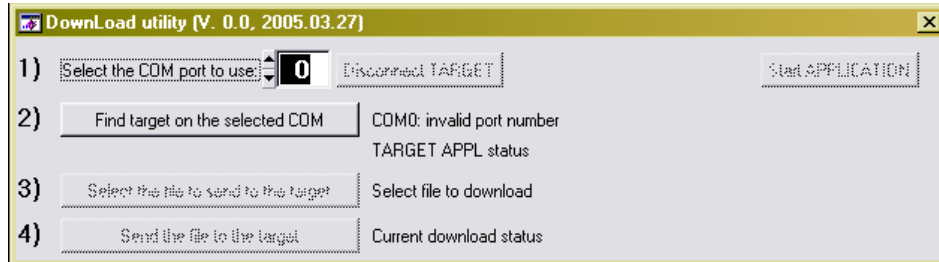
SWITCH ON THE GENERATOR AND RUN THE APPLICATION



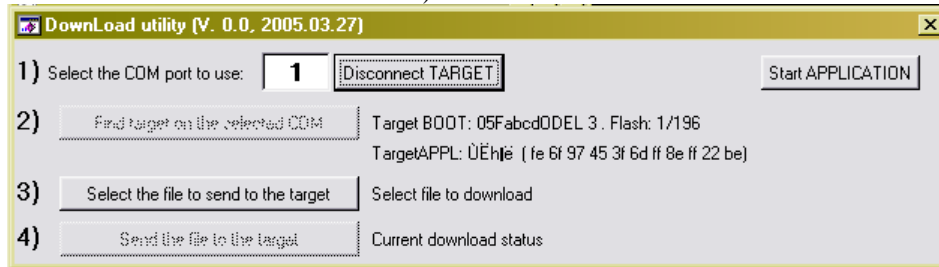
DnLd

| DOCUMENTO | | FOGLIO |
|---|--|---------|
| NOMEFILE | | 1 |
| \\ISO9000\25 EEN-014 TouchScreen Software Download.doc | | di 3 |

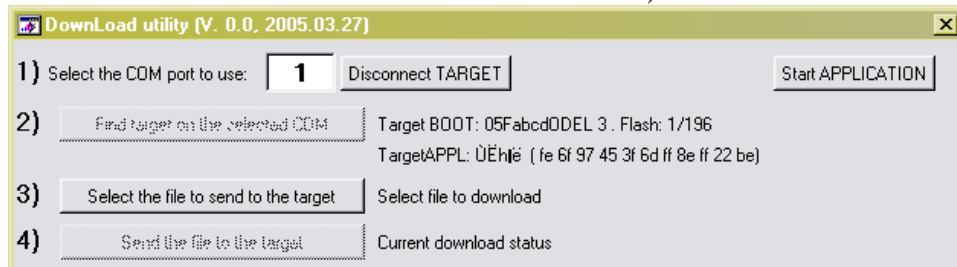
SELECT THE SERIAL PORT IN USE TO DOWNLOAD THE APPLICATION USING SELECTOR n. 1)



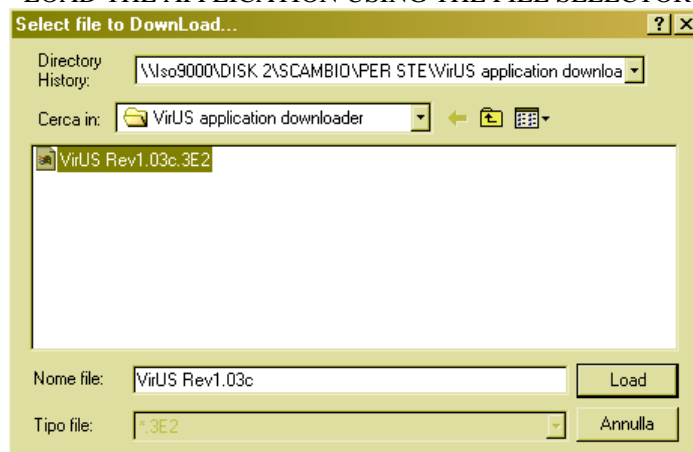
FIND THE TARGET CONSOLE PRESSING KEY n. 2)



SELECT THE APPLICATION TO BE DOWNLOADED USING KEY n. 3)

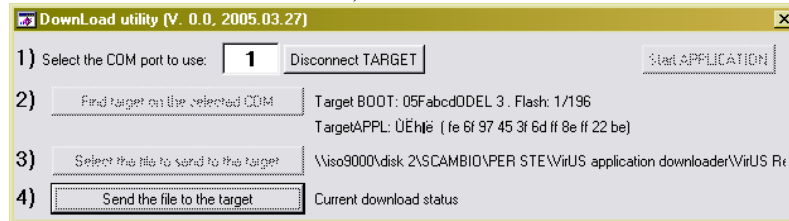


LOAD THE APPLICATION USING THE FILE SELECTOR

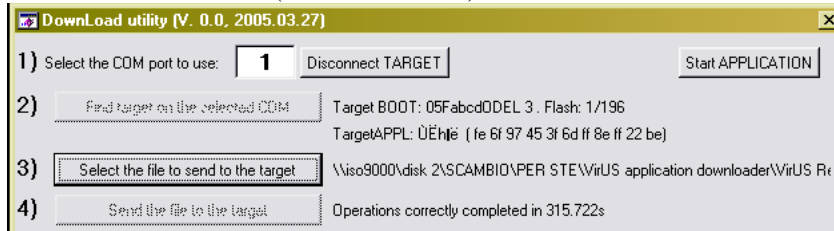


| DOCUMENTO | FOGLIO |
|---|--------|
| NOMEFILE | 2 |
| \\ISO9000\25 EEN-014 TouchScreen Software Download.doc | 3 |

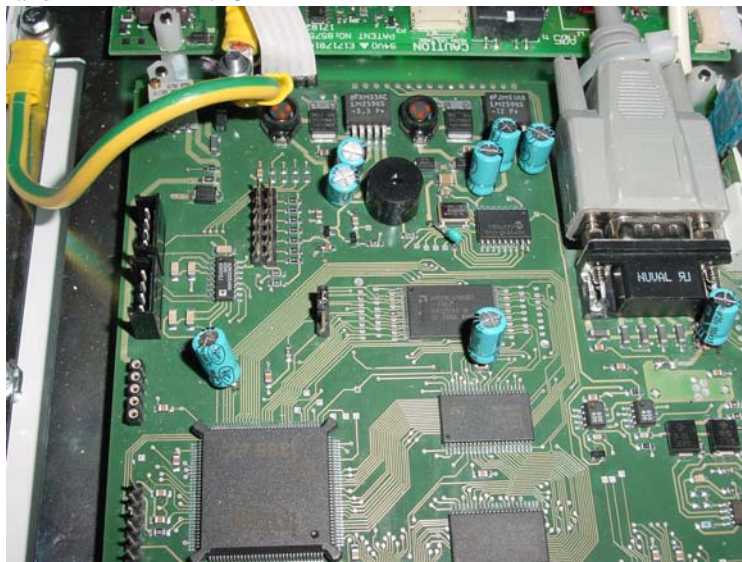
START THE DOWNLOAD PRESSING THE KEY n. 4)



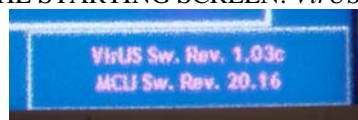
WAIT UNTIL DOWNLOAD IS COMPLETE (around 6 minutes)



SWITCH OFF THE GENERATOR
REMOVE JUMPER “JP1” and ADAPTER “J13”



CLOSE THE CONTROL CONSOLE
SWITCH ON THE GENERATOR
CHECK THE REVISION CHANGE ON THE STARTING SCREEN: *VirUS Sw. Rev. 1.03c*



| DOCUMENTO | | FOGLIO |
|---|--|---------|
| NOMEFILE | | 3 |
| \\ISO9000\25 EEN-014 TouchScreen Software Download.doc | | di 3 |